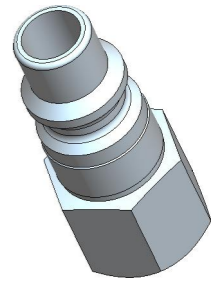
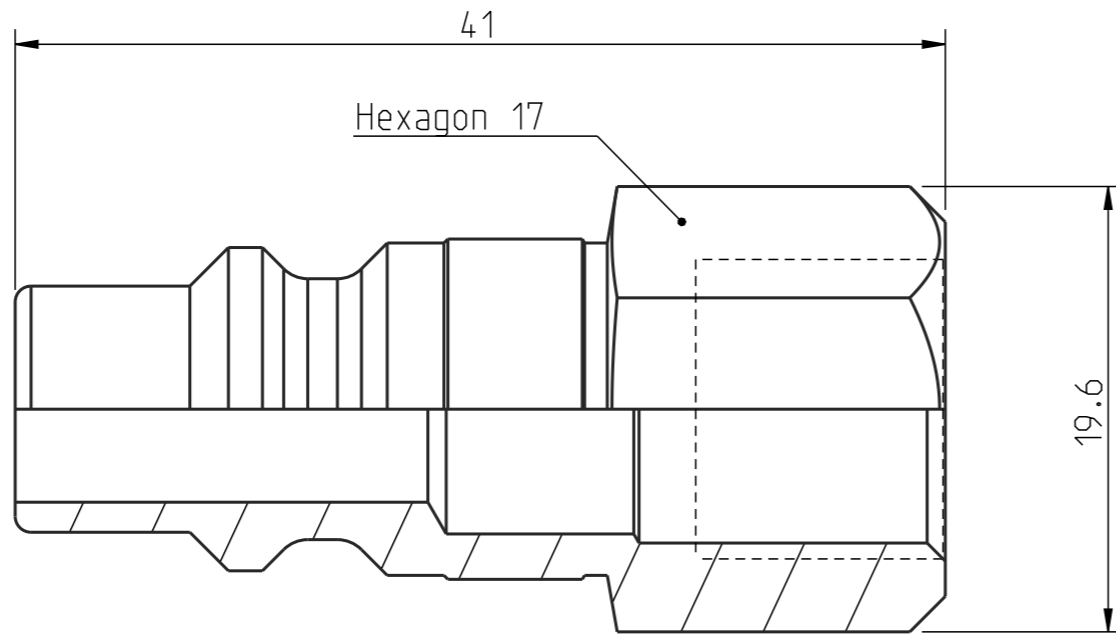
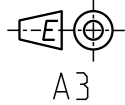


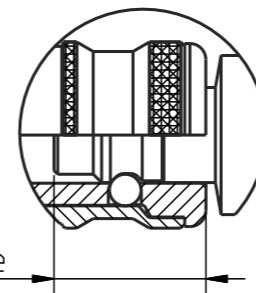
Alta rättigheter förbehålls.
All rights reserved.
Alle Rechte vorbehalten.

Diese Zeichnung darf weder ganz noch teilweise ohne unsere ausdrückliche Genehmigung kopiert oder auf andere Weise vervielfältigt werden. Werden. Zuwiderhandlungen werden gerichtlich verfolgt.

Denna handling får ej utan vårt medgivande delges annan, kopieras eller eljest obehörigen användas. Överlåtelse härvid beivras med stöd av gällande lag. This document must not be copied, either completely or in part, without permission. Any infringement will have legal consequences.



1:1



Connection stroke

Product no: 10_430_5202

DN: 8,2 mm
 Connection stroke: - mm
 Max WP connected: 16 bar
 Min BP connected: - bar
 Temperature range: - °C - - °C
 Connection: G 1/4" Fem
 Sealing material:



1	1	Nipple	Steel, FeZn5 c 1A			
Detalj Item	Antal Quant.	Benämning Description	Material Material			
Skala Scale	3:1	Ritad Drawn	CABLHE	Kontr. Checked	Godk. Appr.	140218
Assembly drawing			Ritning nr./Drawing No.		Utg./Issue	
			50_430_5202		AA	

