

Configuration flexibility

Excellent value

Low weight

No tools required for assembly



Technical features

Medium:

Compressed air

Operating pressure:

12 bar max.

Flow:

Startpoint 0,55 dm³/s at 6,3 bar inlet pressure

More Information - see below

Nominal bowl capacity:

52 ml

Fluid/Ambient temperature:

-20°C ... +52°C

Air supply must be dry enough to avoid ice formation at temperatures below +2°C.

Materials:

Body: PBT

Transparent bowl: Polycarbonate

Sight-feed dome: Transparent nylon


Internal parts: Acetal

Elastomers:

Bowl O-ring - Neoprene

All others - Nitrile

Technical data, standard model

Symbol	Port size	Connector	Flow (dm ³ /s) *1)	Weight (kg)	Model
	G 1/4	With mounting bracket	24 (1440 l/min)	0,19	L92C-26P-ETN

*1) Typical flow with at 6,3 bar inlet pressure and a 0,5 bar pressure drop.

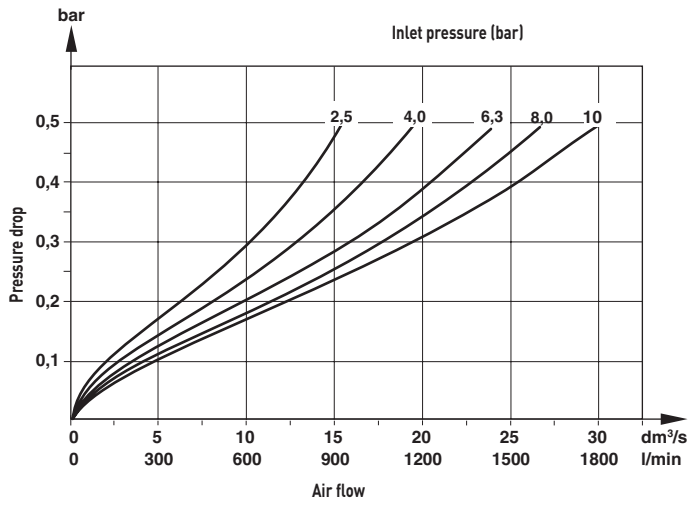
Options selector

L92C-★★P-ETN

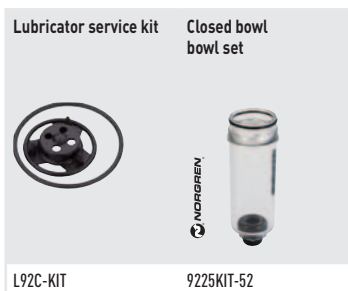
Connector with mounting bracket	Substitute	←
6 mm Push-in fitting	6D	
8 mm Push-in fitting	8D	
10 mm Push-in fitting	AD	
12 mm Push-in fitting	BD	
G 1/8	1G	
G 1/4	2G	
G 3/8	3G	
Connector without mounting bracket	Substitute	←
G 1/4	2V	
Connector	Substitute	←
without	NN	

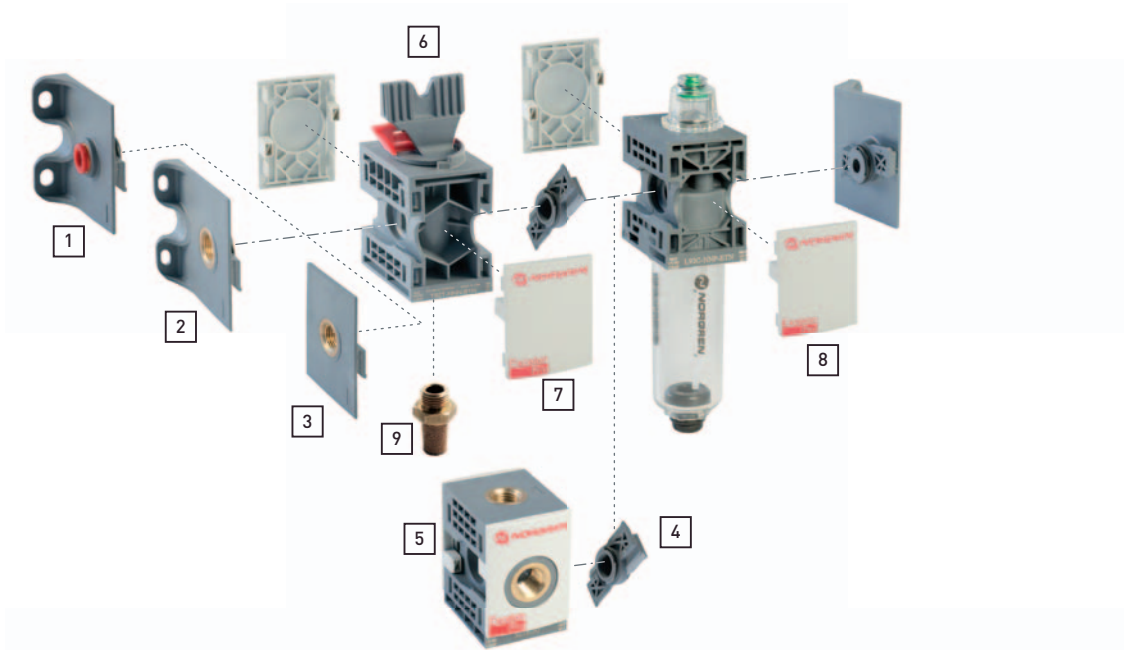
Flow characteristics

Port size: G1/4



Service kit



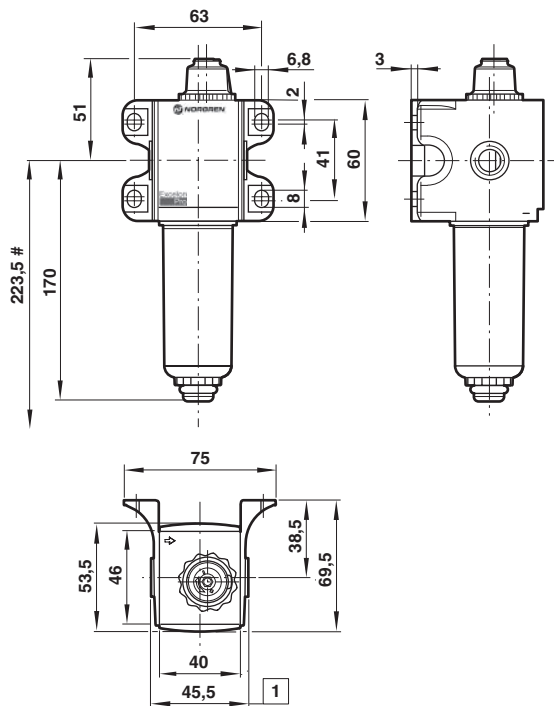
Component parts and accessories


	Push-in fitting connector with mounting bracket	Threaded connector with mounting bracket	Threaded connector without mounting bracket		
Port size	1	2	3		
G1/8	-	9212KIT-1G	-		
G1/4	-	9212KIT-2G	9211KIT-2V		
G3/8	-	9212KIT-3G	-		
ø 6 mm	9213KIT-6D	-	-		
ø 8 mm	9213KIT-8D	-	-		
ø 10 mm	9213KIT-AD	-	-		
ø 12 mm	9213KIT-BD	-	-		
Quick connector	Porting block Plugs not included	Lockout/shut-off valve with exhaust port	Locking plate	Silencer	
4	5	6	7	9	
9210-50	9216-51	T92T-NNN-B1N	9236-88/X10 *1)	T40M0500	

*1) 10 pieces


Warning

 Locking plates **MUST** be in place before pressurizing any Excelon Pro unit.

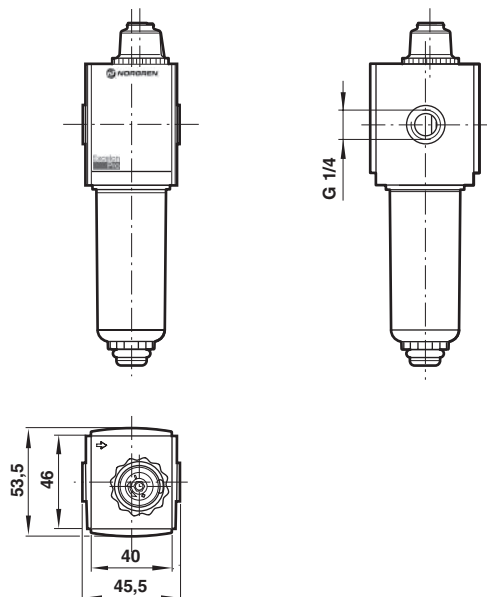
Lubricator with wall mounting bracket


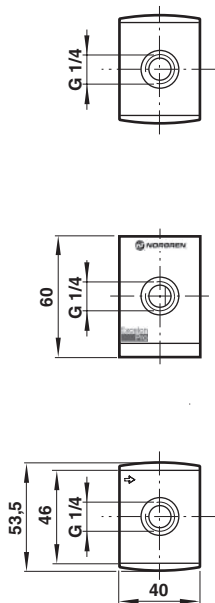
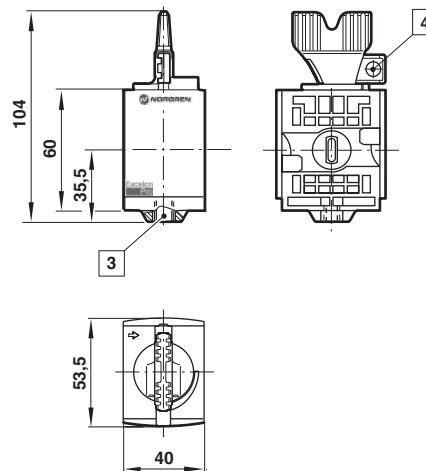
Minimum clearance required to remove bowl

1 Connector Dimensions

1/8" and 1/4" threaded connectors shown. See below for port-to-port dimensions for additional connectors.

PIF Connector	Port-to-port
6 mm, 8 mm	60
10 mm, 12 mm	62
Threaded connector	
G1/8, G1/4	45,5
G3/8	76

Lubricator without mounting bracket, G 1/4 port size


Porting block

Lockable/shut off valve


- 3 M5 exhaust port
- 4 Lever lockable only in closed position.
Lock slide accepts \varnothing 7 mm padlock/shackle.

Warning

These products are intended for use in industrial compressed air systems only. Do not use these products where pressures and temperatures can exceed those listed under **»Technical features«**.

Before using these products with fluids other than those specified, for non-industrial applications, life-support systems, or other applications not within published specifications, consult NORGREN.

Through misuse, age, or malfunction, components used in fluid power systems can fail in various modes.

The system designer is warned to consider the failure modes of all component parts used in pneumatic systems and to provide adequate safeguards to prevent personal injury or damage to equipment in the event of such failure.

System designers must provide a warning to end users in the system instructional manual if protection against a failure mode cannot be adequately provided.

System designers and end users are cautioned to review specific warnings found in instruction sheets packed and shipped with these products.