

**Olympian Plus
Filter/Regulator
1/4", 3/8", 1/2", 3/4" Port Sizes**

- **Olympian Plus plug in design**
- **High Efficiency water and particle removal**
- **Quick release bayonet bowl**
- **High visibility prismatic sight glass***
- **Push to lock adjusting knob with tamper resistant option**

* UK and other patents pending

Technical Data

Fluid: Compressed air

Maximum pressure:

Guarded transparent bowl: 10 bar (150 psig)

Metal bowl: 17 bar (250 psig)

Operating temperature*:

Guarded transparent bowl: -20° to +50°C (0° to +125°F)

Metal bowl: -20° to +80°C (0° to +175°F)

* Air supply must be dry enough to avoid ice formation at temperatures below +2°C (+35°F).

Partical removal: 5, 25 or 40 µm. Within ISO 8573-1, Class 3 and Class 5

Typical flow at 6,3 bar (90 psig) inlet pressure:

106 dm³/s (225 scfm)

Automatic drain connection: 1/8"

Automatic drain operating conditions:

Minimum pressure: 0,7 bar (10 psig).

Drain opens when bowl pressure drops below 0,2 bar (3 psig).

Minimum air flow: 1 dm³/s (2 scfm) required to close drain.

Gauge Ports:

1/8" PTF with PTF main ports

1/8" ISO Rc with ISO Rc main ports

1/8" ISO Rc with ISO G main ports

Nominal bowl size:

0,2 litre (7 fluid ounce)

Materials:

Body: Zinc

Bonnet: Aluminium

Valve: Brass

Yoke: Zinc

Metal bowl: Aluminium

Standard metal bowl prismatic liquid level indicator lens:

Grilamid

Optional metal bowl sight glass: Pyrex

Optional transparent bowl: Polycarbonate

Element: Sintered plastic

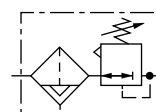
Elastomers: Synthetic rubber



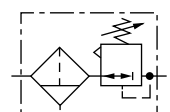
Ordering Information

See *Ordering Information* on the following pages.

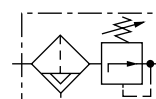
ISO Symbols



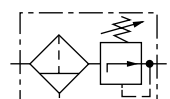
Automatic Drain
Relieving



Manual Drain
Relieving



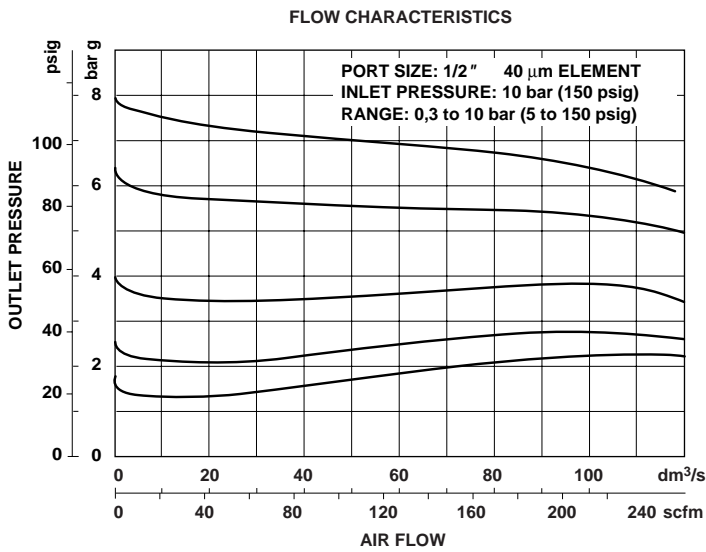
Automatic Drain
Non Relieving



Manual Drain
Non Relieving



Typical Performance Characteristics



Ordering Information. Models listed include ISO G threads, knob adjustment, automatic drain, metal bowl, 40 µm element, relieving diaphragm and 0,3 to 10 bar (5 to 150 psig) outlet pressure adjustment range* without gauge.

Port Size	Model	Flow† dm ³ /s (scfm)	Weight kg (lb)
G1/4	B64G-2GK-AD3-RMN	30 (64)	1,71 (3.80)
G3/8	B64G-3GK-AD3-RMN	76 (161)	1,69 (3.76)
G1/2	B64G-4GK-AD3-RMN	106 (225)	1,66 (3.69)
G3/4	B64G-6GK-AD3-RMN	N.A.	2,02 (4.49)

† Typical flow with 10 bar (150 psig) inlet pressure, 6,3 bar (90 psig) set pressure and a 1 bar (15 psig) droop from set.

Alternative Models

B 6 4 G - ★ ★ ★ - ★ ★ ★ - ★ ★ ★

Port Size	Substitute
1/4"	2
3/8"	3
1/2"	4
3/4"	6

Threads	Substitute
PTF	A
ISO Rc taper	B
ISO G parallel	G

Adjustment	Substitute
Knob	K
T-bar	T

Gauge	Substitute
With	G
Without	N

Outlet Pressure Adjustment Range*	Substitute
0,3 to 4 bar (5 to 60 psig)	F
0,3 to 10 bar (5 to 150 psig)	M
0,7 to 17 bar (10 to 250 psig)	S**

Diaphragm	Substitute
Relieving	R
Non relieving	N

Element	Substitute
5 µm	1
25 µm	2
40 µm	3

Bowl	Substitute
Metal with liquid level indicator	D
Guarded Transparent	P

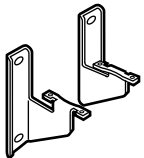
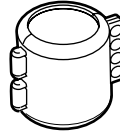

Drain	Substitute
1/4 turn manual	M
Automatic	A

* Outlet pressure can be adjusted to pressures in excess of, and less than, those specified. Do not use these units to control pressures outside of the specified ranges.

** Units with 17 bar (250 psig) adjustment range are available only with the T-bar adjustment; therefore substitute **T** at the 7th digit and **S** at the 12th position.



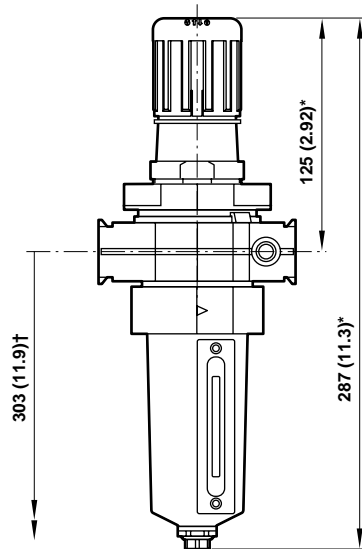
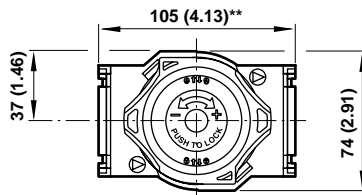
Accessories

				
Wall Mounting Bracket	Tamper Resistant Kit	Ø 50 mm Pressure Gauge	R1/8 Connection	1/8 PTF Connection
74504-50	4355-50	4 bar (60 psig):	18-013-012	18-013-202
	Seal Wire: 2117-01	10 bar (150 psig):	18-013-013	18-013-204
		25 bar (360 psig):	18-013-014	18-013-206

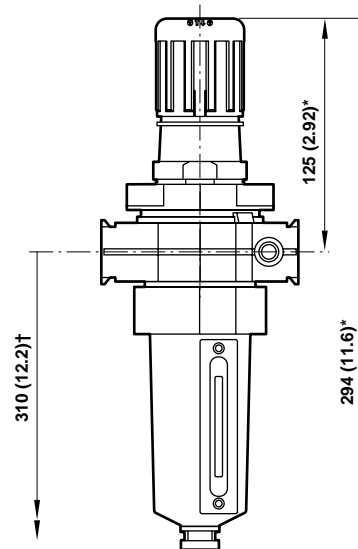
Dimensions mm (inches)

Panel mounting hole diameter: 52 mm (2.06")

Panel thickness: 0 to 6 mm (0" to 0.25")



B64G (automatic drain)



B64G (manual drain)

* Reduces by 4 mm (0.16") with knob in locked position. Add 37 mm (1.46") for unit with 'T' handle

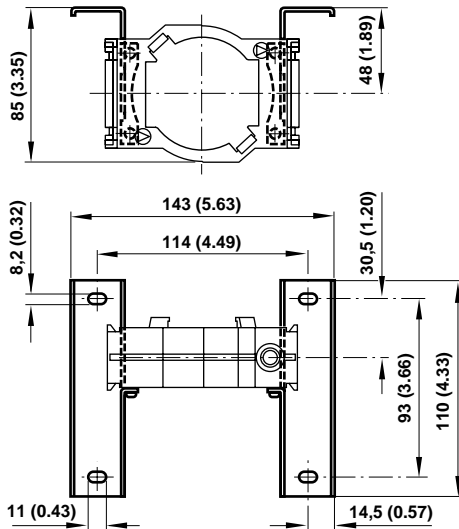
† Minimum clearance required to remove bowl.

** 157 mm (6.18") for G3/4 models



Bracket Mounting

Use 8 mm (5/16") screws to mount bracket to wall.



Bracket Kit Reference

Item	Part Number
Wall Bracket	74504-50

Service Kits

Item	Type	Part Number
Service kit	Relieving	4383-200
	Non relieving	4383-201
Replacement elements	5 µm	4338-01
	25 µm	4338-99
	40 µm	4338-02
Replacement Sight Glass	Prismatic (standard)	4380-040
	Pyrex	4380-041
Replacement Drains	Automatic	3000-97
	Manual	684-84

Service kit includes diaphragm assembly, valve assembly, valve spring, louvre o-ring, bowl o-ring, drain seal.

Warning

These products are intended for use in industrial compressed air systems only. Do not use these products where pressures and temperatures can exceed those listed under 'Technical Data'.

Before using these products with fluids other than those specified, for non-industrial applications, life-support systems, or other applications not within published specifications, consult NORGREN.

Through misuse, age, or malfunction, components used in fluid power systems can fail in various modes. The system designer is warned to consider the failure modes of all component parts used in fluid power systems and to provide adequate safeguards to prevent personal injury or damage to equipment in the event of such failure.

System designers must provide a warning to end users in the system instructional manual if protection against a failure mode cannot be adequately provided.

System designers and end users are cautioned to review specific warnings found in instruction sheets packed and shipped with these products.

Water vapor will pass through these units and will condense into liquid if air temperature drops in the downstream system. Install an air dryer if water condensation could have a detrimental effect on the application.