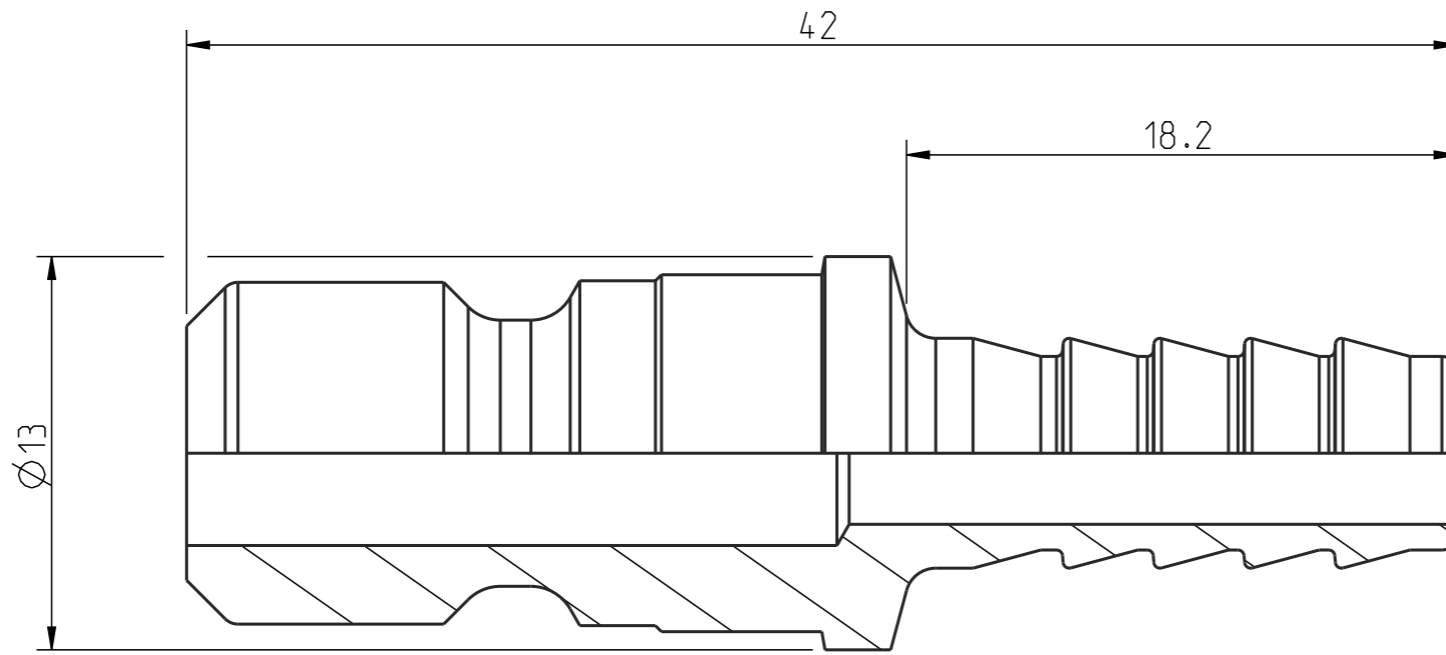


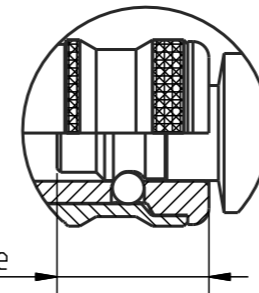
Diese Zeichnung darf weder ganz noch teilweise ohne unsere ausdrückliche Genehmigung kopiert oder auf andere Weise vervielfältigt werden. Alle Rechte vorbehalten.

Denna handling får ej utan vårt medgivande delges annan, kopieras eller eljest obehörigen användas. Övertryckelse härvid beivras med stöd av gällande lag. This document must not be copied, either completely or in part, without permission. Any infringement will have legal consequences.

A3



1:1



Connection stroke

Product no: 10_303_5002

DN: 4.7 mm
 Connection stroke: - mm
 Max WP connected: 16 bar
 Min BP connected: - bar
 Temperature range: +100 °C - -20 °C
 Connection: Hose 1/4" 6.3mm
 Sealing material:



1	1	Nipple	Steel, FeZn 8 P1
Detalj Item	Antal Quant.	Benämning Description	Material Material
Skala Scale	4:1	Ritad Drawn	CABLHE
Kontr. Checked	-	Godk. Appr.	OG
Alt. no.	-	Dat. Date	131029
Ritning nr./Drawing No.		Utg./Issue	
50_303_5002		AA	

Assembly drawing

50_303_5002

AA