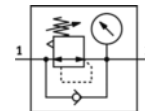
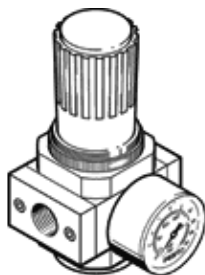


Pressure regulator LR-1-D-MAXI

Part number: 159627

FESTO



Data sheet

Feature	values
Size	Maxi
Series	D
Actuator lock	Rotary knob with lock
Assembly position	Any
Design structure	Piloted piston regulator
Controller function	Output pressure constant with secondary exhaust
Pressure gauge	with pressure gauge
Working pressure	0 ... 16 bar
Pressure control range	0.5 ... 12 bar
Max. pressure hysteresis	0.4 bar
Standard nominal flow rate	11,500 l/min
Operating medium	Compressed air in accordance with ISO8573-1:2010 [7:4:4] Inert gases
Note on operating and pilot medium	Lubricated operation possible (subsequently required for further operation)
Air purity class at output	Compressed air in accordance with ISO8573-1:2010 [7:4:4] Inert gases
Medium temperature	-10 ... 60 °C
Ambient temperature	-10 ... 60 °C
Authorization	Germanischer Lloyd
Product weight	1,200 g
Mounting type	Front panel installation Line installation with accessories
Pneumatic connection, port 1	G1
Pneumatic connection, port 2	G1
Materials note	Conforms to RoHS
Materials information for subbase	Zinc die-casting
Materials information for seals	NBR
Materials information, housing	Zinc die-casting